

GEO 56806

ADVANCED QUALITATIVE RESEARCH DESIGN & DATA COLLECTION

Wageningen University | 6 ECTS | Jan. 2021 (Period 3)

What's this course about?

Advanced Qualitative Research Design and Data Collection (GEO 56806) offers PhD candidates and advanced master's students enrolled in the graduate programme:

- A fuller grasp of the analytical value of a range of qualitative methods relative to your own project's research questions and epistemological/theoretical positioning
- The knowledge required to identify different methods' particular logistical requirements and challenges
- The knowledge and skills for anticipating and responding to ethical issues posed by the use of specific methods
- The time and space to design a well-rounded strategy for data collection for your own research project aligned with your project's epistemological/theoretical framework



WAGENINGEN
UNIVERSITY & RESEARCH

Register

WUR PhD candidates:
Contact Marcella Haan
(marcella.haan@wur.nl)

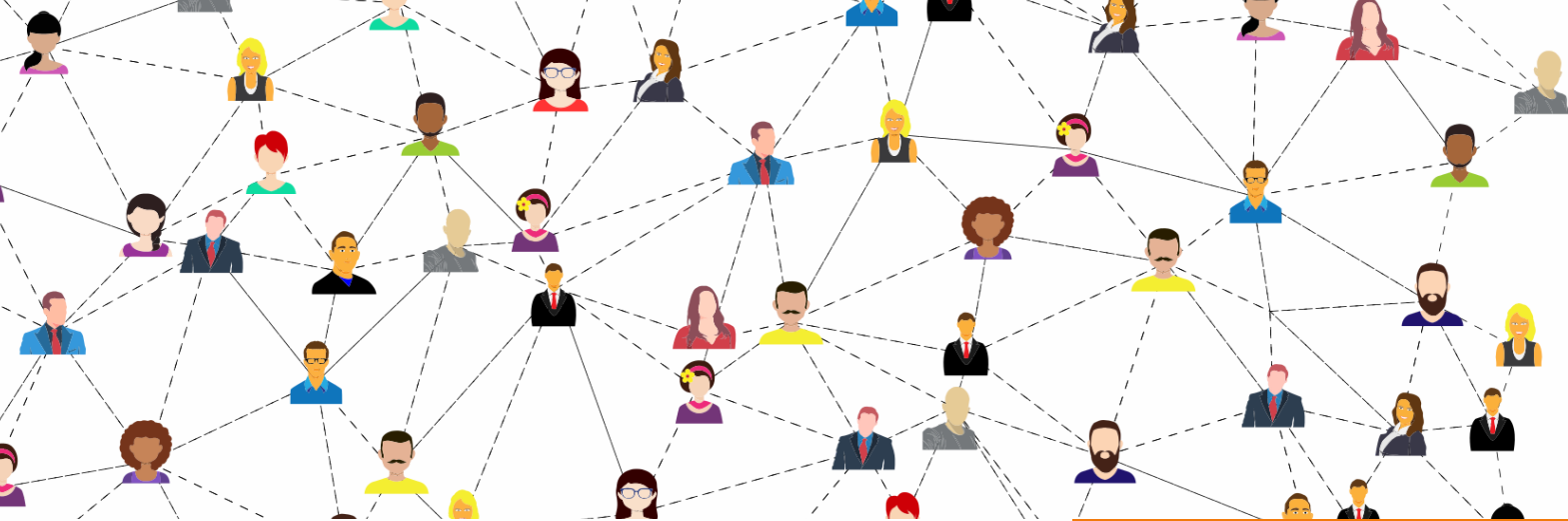
WUR Master's students:
Register online as usual

Schedule

Due to Covid-19, this course will run fully online. It spans 4 weeks (4th-25th January 2021), with sessions held on Mondays, Tuesdays and Thursdays from 9-12:00.

More info

www.wur.nl/en/activity/Advanced-Qualitative-Research-Design-and-Data-Collection-GEO-56806-6-ECTS.htm



What's the course structure?

This course comprises compulsory and free-choice sessions:

- **Compulsory sessions** in Weeks 1 & 4 enable students to critically investigate the values and forces underpinning their research projects, reflect on their researcher positionality and render their research project design more nuanced and robust.
- **Free choice sessions** in Weeks 2 & 3 cover a range of qualitative data collection methods and techniques (see list below). Students write their assignments based on (a minimum of) 4 free-choice sessions that best fit with the research they are undertaking or wish to undertake.

What topics and methods are covered?

- Research as a formal system and the role of data in it (C)
- Researcher positionality and reflexivity (C)
- Ethnography and participant observation (FC 1)
- Data collection for discourse (FC 2)
- Interviewing (FC 3)
- Participatory and co-creation methods (FC 4)
- Revisiting ontology with actor-network approaches (FC 5)
- Visual research methods (FC 6)
- Using the other senses in data collection (FC 7)
- Connecting the course content to practice x 2 (C)

(C = Compulsory session; FC = Free choice session)



Teaching team

Karolina Doughty, GEO
 Clemens Driessen, GEO
 Robert Fletcher, SDC
 Stasja Koot, SDC
 Rico Lie, KTI
 Meghann Ormond, GEO
 Elisabet Rasch, SDC
 Peter Tamás, Biometris
 Anke de Vrieze, RSO